



An Introduction to Architectural Renderings Using Enscape

SALAM YOUSEF

NOV-2018

Items Covered:

- ▶ SketchUp as a modeling Program
- ▶ Sketchup Extensions
- ▶ Enscape

Getting Started with SketchUp

- ▶ Download Sketchup Make 2017 (not 2018)
- ▶ <https://www.sketchup.com/>



Licensed To: SketchUp Make 2017 User

Default Template: Simple Template - Meters

Add License

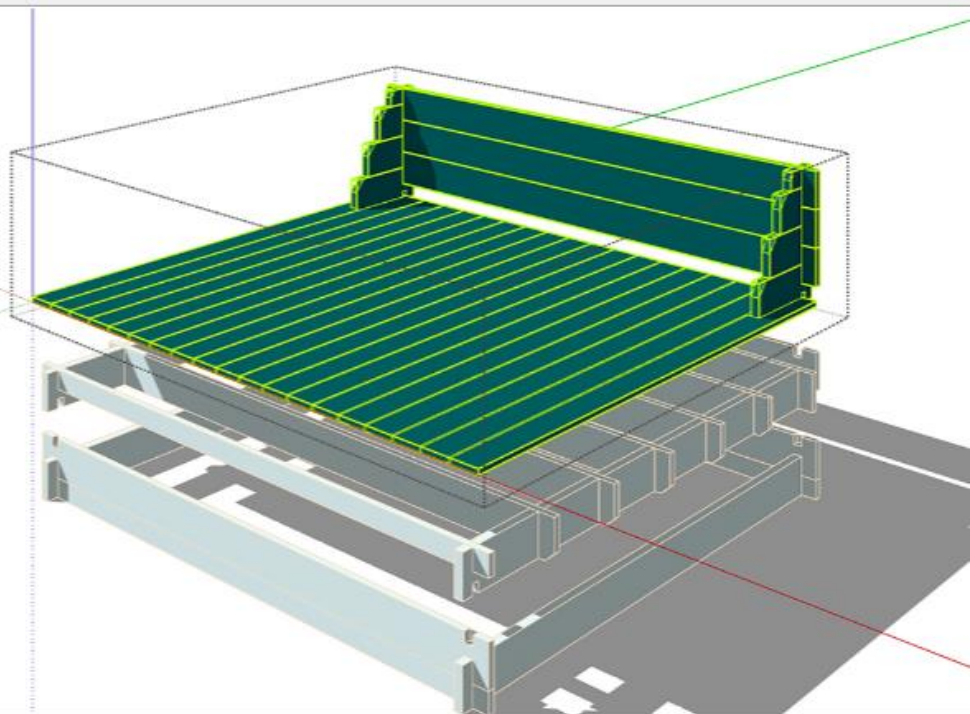
Choose Template

▼ Learn

Say hello to SketchUp Free

The future of free 3D modeling is here: try SketchUp in a web browser today.

Try SketchUp Free



- ▶ License
- ▶ Template

Start using SketchUp

Licensed To: SketchUp Make 2017 User

Default Template: Simple Template - Meters

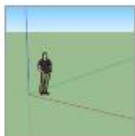
Add License

Choose Template

► Learn

► License

▼ Template



Simple Template - Feet and Inches

Units: Inches

This is a general user modeling template with basic styling and simple colors.



Simple Template - Meters

Units: Meters

This is a general user modeling template with basic styling and simple colors.



Architectural Design - Feet and Inches

Units: Inches

This template is for conceptual design development.



Architectural Design - Millimeters

Units: Millimeters

This template is for conceptual design development.



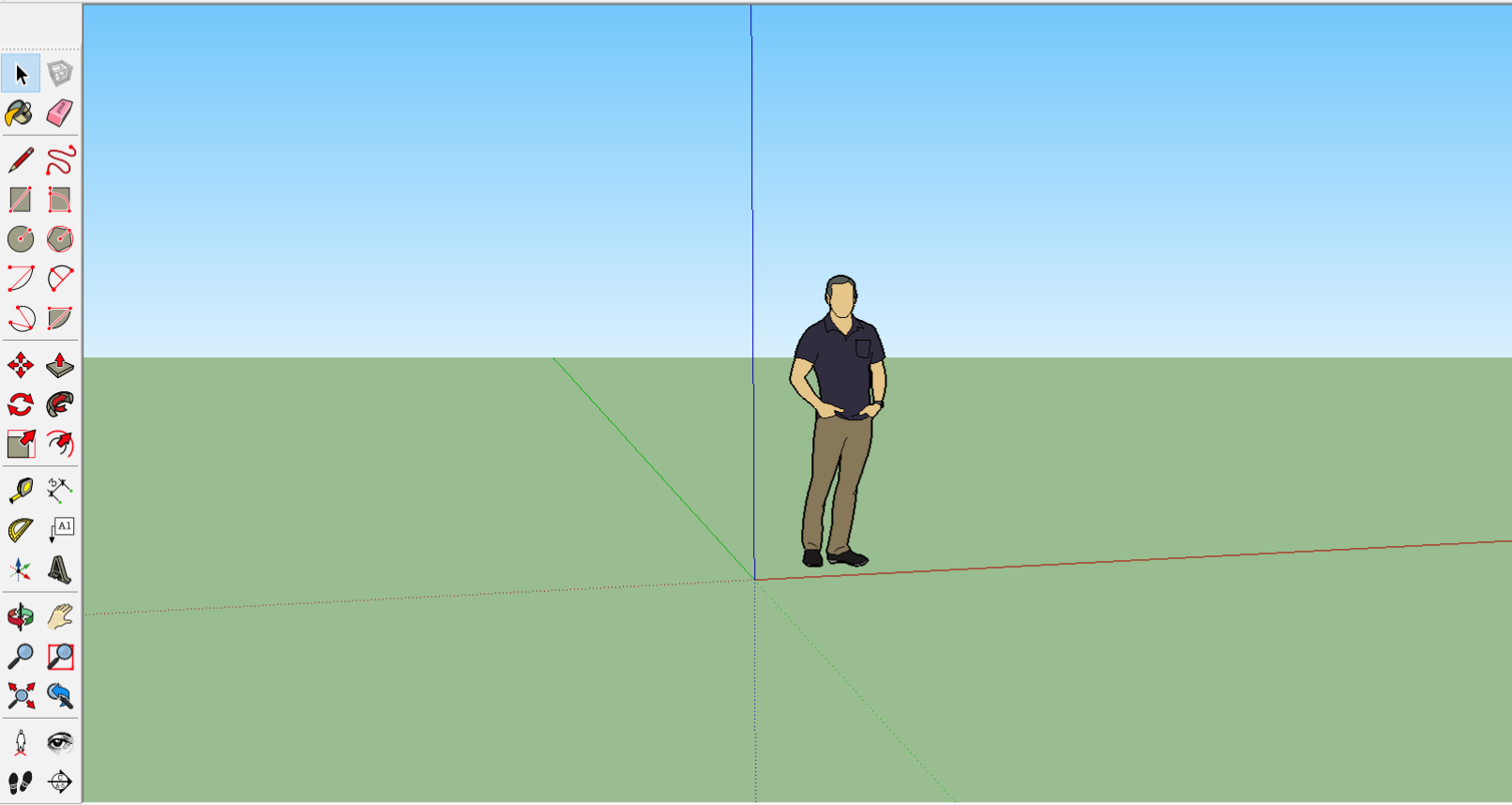
Architectural Design - Meters

Units: Meters

This template is for conceptual design development.

Architectural Design - Meters

Start using SketchUp



Default Tray

- Entity Info
- Components
- Styles
- Scenes
- Instructor
- Layers
- Shadows
- Soften Edges
- Materials

Default

Select Edit

Colors

Light Pink	Light Red	Red	Dark Red
Light Orange	Orange	Dark Orange	Brown

Move the camera to the top view of the model.

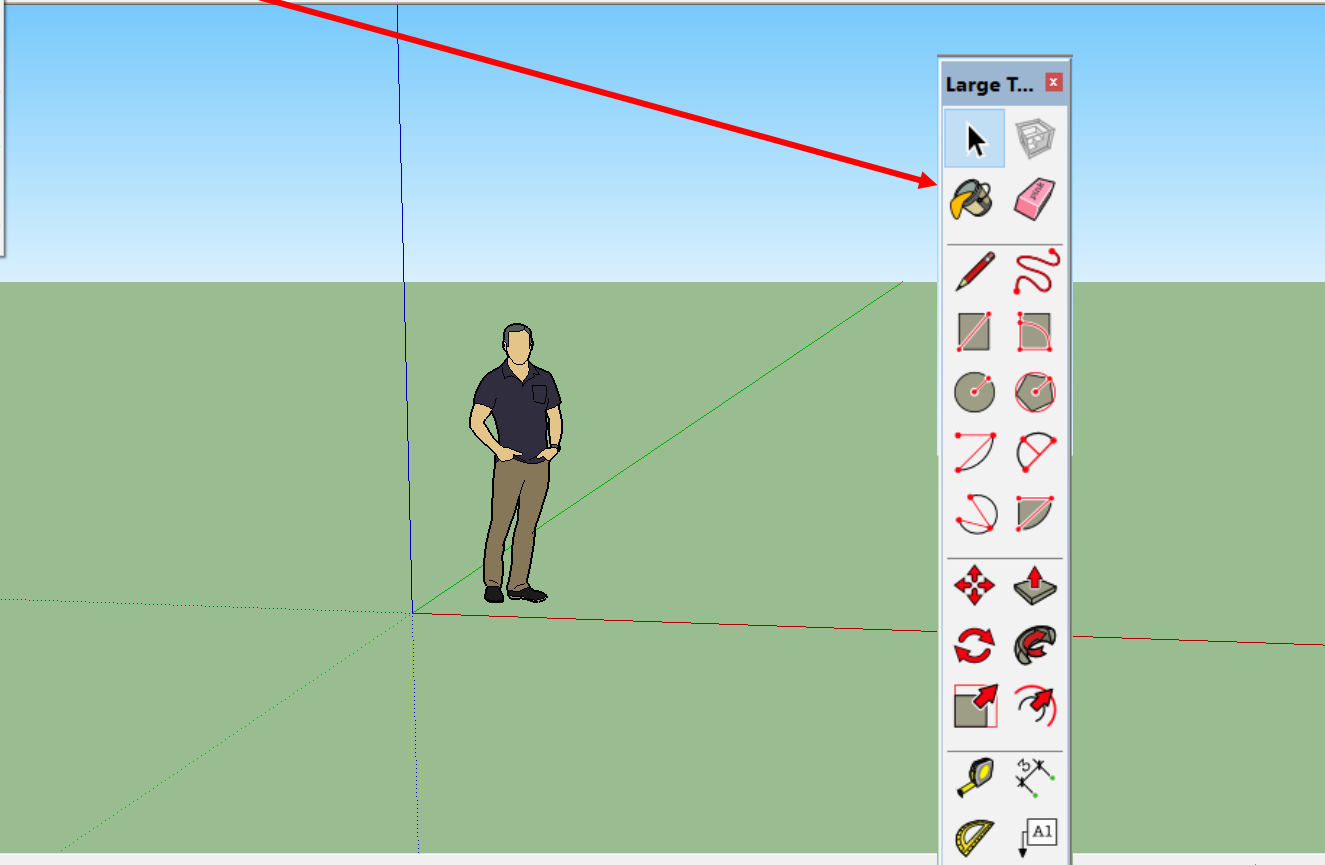
Measurements

Getting Started





- Toolbars...
- Scene Tabs
- Hidden Geometry
- Section Planes
- Section Cuts
- Axes
- Guides
- Shadows
- Fog
- Edge Style >
- Face Style >
- Component Edit >
- Animation >



Large T...

Default Tray

- Entity Info
- Components
- Styles
- Scenes
- Instructor
- Layers
- Shadows
- Soften Edges
- Materials

Select | Edit

Colors

Light Pink	Light Red	Red	Dark Red
Light Orange	Orange	Dark Orange	Dark Red

3D warehouse

3D Warehouse

3D Warehouse

architecture

Here are your results (More than 1,000 items found)

KEYWORDS

Add Keyword

architecture

FILE SIZE

0 - 50 MB

COMPLEXITY

0 - MAX POLYGONS

FEATURES

Manufacturer Model

Dynamic Component



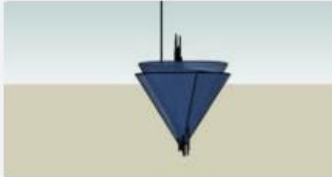

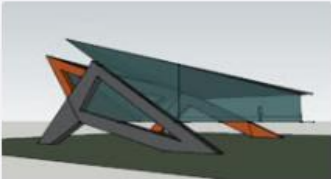
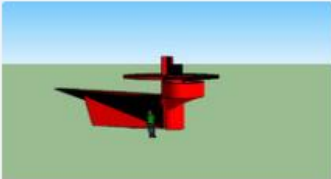

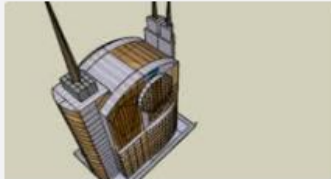
Geolocated

TITLE & AUTHOR

MODELS

COLLECTIONS

Sort by: Relevance

 <p>Architecture</p> <p>vindem</p> <p>56</p>	 <p>Architecture</p> <p>Architecture</p> <p>155</p>	 <p>Architecture</p> <p>Worang</p> <p>58</p>	 <p>Architecture</p> <p>Ken</p> <p>112</p>
 <p>Architecture</p> <p>anonymous</p> <p>601</p>	 <p>Architecture</p> <p>kilinou</p> <p>49</p>	 <p>Architecture</p> <p>Architecture</p> <p>1K</p>	 <p>Architecture</p> <p>Architecture</p> <p>150</p>

Extension Warehouse

The screenshot shows the Extension Warehouse website interface. At the top, there is a navigation bar with a search bar and a 'Sign In' link. Below the navigation bar is a grid of extension icons. A large central banner reads 'Welcome to Extension Warehouse' and 'The best place to find and install add-ons for SketchUp!'. A red button at the bottom of the grid says 'Browse all of the Extensions'. On the right side, there is a 'Top Extensions' list with a dropdown menu set to '- All Industries -'. The list includes items like 'V-Ray 3.6 for SketchUp', 'SketchUp STL', '1001bit Tools (Freeware)', 's4u Make Face', 'TT_Lib?', 'Curviloft', 'CleanUp3', 'RoundCorner', '* LightUp for SketchUp', and 'CLF Shape Bender'. Below this is a 'Top Developers' section with profile pictures and names: 'Eneroth3', 'ThomThom', and 'Chris Fullmer'. At the bottom left, there is a 'Categories' section with a list of categories and their respective counts: 'Rendering (162)', 'Reporting (107)', '3D Printing (54)', 'Scheduling (31)', 'Productivity (444)', and 'Animation (89)'.

Extension Warehouse

Search Extension Warehouse Search Q Sign In

Welcome to Extension Warehouse
The best place to find and install add-ons for SketchUp!

ies

ProductConnect

Top Extensions

- All Industries -

- V-Ray 3.6 for SketchUp
- SketchUp STL
- 1001bit Tools (Freeware)
- s4u Make Face
- TT_Lib?
- Curviloft
- CleanUp3
- RoundCorner
- * LightUp for SketchUp
- CLF Shape Bender

More...

Top Developers

- Eneroth3
- ThomThom
- Chris Fullmer

Categories

- Rendering (162)
- Reporting (107)
- 3D Printing (54)
- Scheduling (31)
- Productivity (444)
- Animation (89)

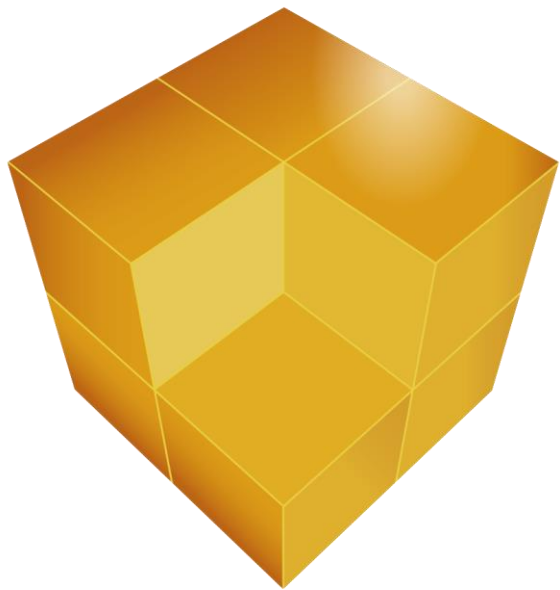
Browse all of the Extensions

SketchUp Extensions

- ▶ Extension Warehouse
 - ▶ 1001 bit – tools (windows, doors, walls, more)
 - ▶ CLF Shape Bender
 - ▶ Weld (joins multiple small segments into one)
 - ▶ Sandbox tools
 - ▶ Selection Toys

Live Application

Enscape



ENSCAPE™

One License For:

- ▶ SketchUp
 - ▶ Revit
 - ▶ ArchiCAD
 - ▶ Rhino
-
- ▶ Student License if Free
 - ▶ You need a university email



show it
better.



REAL TIME RENDER IN SKETCHUP

ENSCAPE™



Get Started



Best Practices



Administration



Assets and Sound



Materials and Lighting



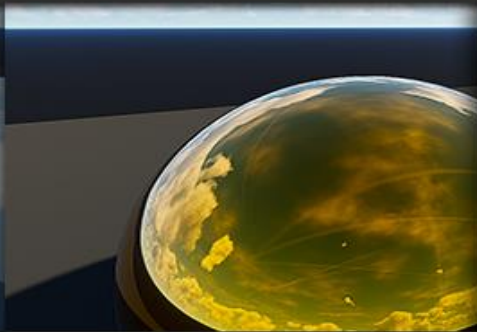
Export Functions



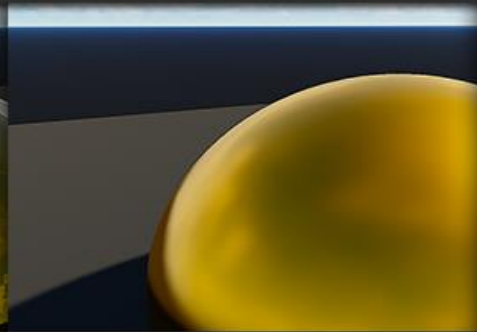
Parameter changes



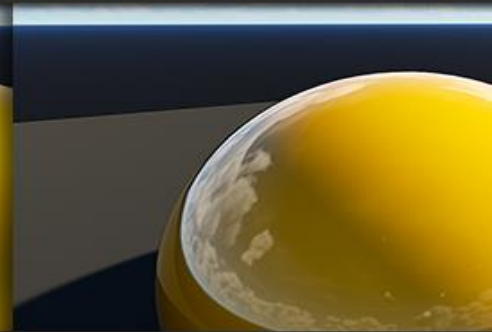
Glass, Glazing



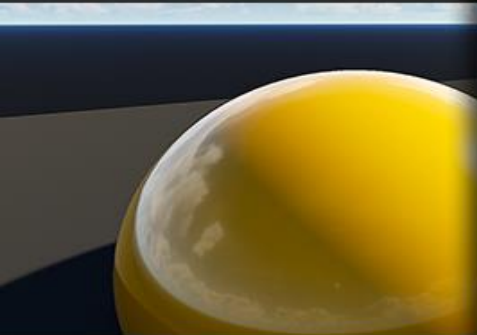
Chrome, Mirror



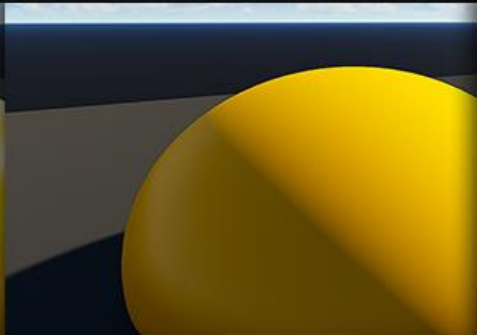
Steel, Copper, Metal, Aluminium



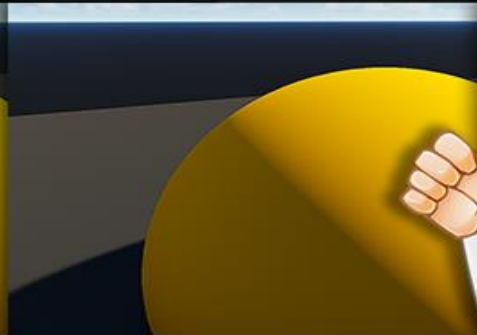
Carpaint, Polished, Acryl



Ceramic



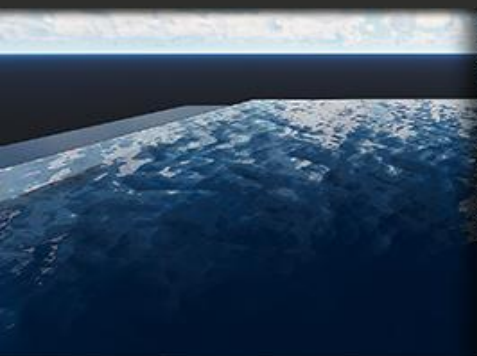
Plastic



Fabric, Cloth



Special materials



Water, Ocean, River



Vegetation, Foliage, Leaf



Emissive



Grass

SKETCHUP KEYWORDS

KEYWORD	EXPLANATION	SPECULAR HIGHLIGHT
Glass, Glazing	0,0	-
Chrome, Mirror	0,0	Metal
Steel, Copper, Metal, Aluminium	0,3	Metal
Carpaint, Polished, Acryl	0,02	-
Ceramic	0,1	-
Marble	0,2	-
Plastic	0,5	-
Fabric, Cloth	0,8	-

Some Enscape Features

- ▶ Real time renderings
- ▶ New components including (3D people, plants, furniture)
- ▶ Ability to add lighting
- ▶ Ability to change the time of the day easily
- ▶ New- ability to change the height of the grass
- ▶ Video taking



Live Application



Thank you